

ANNUAL UNRESERVED SPRING FLEET VEHICLE & HEAVY EQUIPMENT AUCTION

FRIDAY, JUNE 10, 2016 • 10:00 AM CT
York County Fairgrounds, York, Nebraska

Directions: Located at the junction of Lincoln Ave & 25th Street. **Lunch Stand & Restrooms Available.**

Loading & Removal: Loaders will be available the day of auction. After auction day buyer is responsible for arranging load out assistance. All Equipment must be removed by Monday, June 13, 2016 or buyer will be charged a \$25 per item per day storage fee before items can be removed.

This is a preliminary list and is subject to changes or deletions.

Vehicle Equipment and Inspections:

Units available for viewing at the Fairgrounds beginning **June 7th**.

Units available to run 2PM to 4PM, no test drives on **June 9th**.

Units available to run 9AM to 10AM, no test drives on **June 10th**.

TRAILERS

(99-188) 1995 DEPC single axle generator trailer, model BF4L1011, 3-phase, 25 KW Lima Ser generator, 3,472 hours, diesel engine SN: 1EP3P1118S1000954

(99-190) 1995 DEPC single axle generator trailer, model BF4L1011, 3-phase, 25 KW Lima Ser generator, 2,412 hours, diesel engine SN: 1EP3P1111S1000956

(99-451) 1984 home made pipe trailer

EQUIPMENT



(82-075) 1976 Caterpillar 824B pusher, 4x4, 23,930 hours, hydrostatic transmission, 343 diesel engine, a/c, no power options, rear main seal is leaking oil into transmission, head

gasket has failed, leaking coolant into engine oil, front blade needs new pins and center cutting blades SN: 36H1376 ****NOTE: This item is located at the Sheldon Station, 4500 West Pella Road, Hallam, NE 68368**



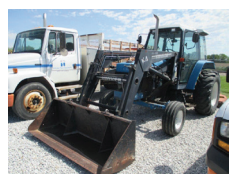
(82-1251) 1995 Caterpillar, 5,000 gallon water wagon, model D25D, 14,191 hours, hydrostatic transmission, 3306 diesel engine, 4x4, no power options, a/c, dent in water tank, has lots of rust

SN: IHK00580 ****NOTE: This item is located at the Sheldon Station, 4500 West Pella Road, Hallam, NE 68368**

(87-270) 1993 Nissan electric forklift, 2,208 hours, model M02 CYM02-00401



(92-163) 1998 JLG self-propelled aerial lift, 4x4, 3,934 hours, hydrostat transmission, model 600SJ, gas and LP engine, does not stay running, fuel delivery problem, VIN: 300038804



(97-512) 1994 4x2 Ford utility tractor, model 7740, 2,722 hours, 304 ci Ford diesel engine, electro shift / pulse command 16 forward, reverse, a/c, K4 Koyker loader installed on unit, SN: BD84388

(97-870) 1991 Ford 7710 utility tractor, 4x2, 1,803 hours, 268 CI Ford diesel engine, dual power transmission, a/c, K5 Koyker loader included, SN: BC50846

(99-337) 2005 Allmand single axle portable work light, gas engine, rear tail light cover missing, no jack, door handle missing, SN: 0664PRO06

(99-338) 2003 Bobcat single axle welder, 20 HP, 250 amps, 479 hours, gas engine, battery is dead, SN: 5DLUWZ81X3E000614

(99-363) 1998 Miller single axle welder, model Trailblazer 302, 714 hours, gas engine, SN: LG102018

(99-733) 1950 HBER tandem axle, tow behind propane weed burner with articulating boom, SN: U1949

SERVICE TRUCKS



(33-868) 2007 Ford F350, 4x4, 112,216 miles, 6.0 L diesel engine, automatic transmission, extended cab, service body, cruise control, a/c,

power windows and locks, transfer case failure-completely destroyed and will need replaced. VIN: 1FDWX35P37EB44163

(33-855) 2007 Ford F350, 4x4, 164,576 miles, automatic transmission, 6.4 L diesel engine, extended cab with rear shelf installed, service body, power windows and locks, cruise control, a/c, has bad injectors, need to replace at least four injectors, VIN: 1FDWX35R08EA18426

(56-710) 2002 Freightliner, regular cab, flat bed, 130,497 miles, 3,342 miles, 7.2 L diesel engine, Allison transmission, 4x2, no power options, cruise control, a/c, VIN: 1FVAB5AL82DJ74952

(33-432) 2000 Ford F350, 4x4, 135,845 miles, automatic transmission, 7.3 L diesel engine, crew cab, service body, power windows and locks, fuel injectors bad, need at least 4 injectors and possible other fuel delivery repairs. VIN: 1FTSW31F4YEA35604

PICKUPS / SUVS / VANS



(56-268 / 56-268G) 1999 Freightliner van, model FL70, 4x2, 107,751 miles, 4,083 hours, Caterpillar 7.2L diesel engine, Allison transmission, cruise control, a/c, no power options, included Onan on

board generator, model 7.5 HDKAL, SN: L980842077 1FV6HJBC3XH969758

(56-267 / 56-267G) 1998 Freightliner van, model FL70, 89,467 miles, 2688 diesel engine, 4x2, automatic transmission, cruise control, a/c, no power options, body of van has bench with storage, includes Onan on board generator, model 7.5 HDKAL, SN: A990857090 VIN: 1FV6HJBC1XH969757

DUMP TRUCKS

(43-472) 2000 Ford F550 roll off, 4x4, 148,685 miles, 6,320 hours, 7.3 L diesel engine, automatic transmission, single cab, cruise control, a/c, power windows and locks, winch 1FDAF57F8YEA88851

(54-616) 1991 GMC Top Kick dump truck, 4x2, 28,202 miles, 5+2 transmission, regular cab, 366 gas engine, no power options, has a 5-yard Rugby dump bed, tach does not work VIN: 1GD7H1P7MJ522890

MISCELLANEOUS

2000 Stellar flatbed rolloff, bent headache rack

Gang box

Epoxy floor paint

Cadweld equipment

Maxon tailgate lift, power in, out, up, down, tilt, this is a tommy gate style lift for a large box van truck.

Shelving units

Electric cable

Chain saws

Bobcat adjustable pallet forks, forks are bent

Loresco earth contact backfill

Electric wire

Honda generator 5000 SX

2000 Arbortec roll off dump bed off of an F550 SN: W10-0003

Alber continuous battery load test unit

Conduit fittings

Valves

Rhino mower, model TW96, unit measures 8ft in width SN: 15486

Grout

Slings

Antique street lights

Bicycle rack

Bentonite

Air compressor

8X8 square tubing 16 ft.

Barrel cart

Greenlee band saw

Flex conduit

Test instruments

2000 Stellar flatbed rolloff, bent headache rack

Vehicle seats

Cordless drill

Pickup spot lights

2000 Stellar flatbed rolloff, bent headache rack

Vehicle seats

Cordless caulking gun

Glad hands

2000 Stellar flatbed rolloff, bent headache rack

Vehicle seats

Safety triangles

Windshield wipers

2000 Stellar flatbed rolloff, bent headache rack

Vehicle seats

First aid kits

Head lights

2000 Stellar flatbed rolloff, bent headache rack

Vehicle seats

Transit

Vehicle ladder racks

2000 Stellar flatbed rolloff, bent headache rack

Vehicle seats

M-scope

Hydraulic impact wrenches

2000 Stellar flatbed rolloff, bent headache rack

Vehicle seats

Flagman's STOP/SLOW signs

Buckets of poly water, wire pulling lube

NEBRASKA PUBLIC POWER DISTRICT OWNERS

The following is owned by the Village of Hampton, 402-631-9613



1984 GMC 7000 Dump Truck W/ 60's Henke Snow Plow, 8.1 Detroit Diesel W/ Allison Automatic, 78730 Miles Showing

(27) Used Hps Street Lights, All In Working Condition, Replaced With New Led's

Misc Office Equipment.

Antique Christmas Decorations, Pole Mount Appx 25 Total With Extra Parts

The following is owned by North Central Public Power District, 402-358-5112



2004 Ford F650 Super Duty with Telelect HR40M aerial bucket (Telelect serial #2030722270), fiberglass utility box, 149,538 miles showing,

automatic transmission, 11R22.5 tires, AM/FM, A/C, PW/PL, power steering, red exterior, gray interior, VIN: 3FRXF65424V619713

2004 Ford F350 XLT Reg Cab Super Duty 4x4, fiberglass utility box, 150,257 miles showing, automatic transmission, 6.0L diesel engine, 265/75R16 tires, AM/FM, A/C, PW/PL, power steering, red exterior, gray interior, VIN: 1FDSF35P84ED98481

2003 18' S & W dump trailer with detachable wire rack, dual axle, battery operated hydraulic dump, pull out ramps, pintle hitch, 235/85R16 tires

The following is owned by the Cornhusker Public Power District, 402-564-2821



2006 Diamond 7300 International 4X4 Bucket Truck, 13,120 hours, 186,000 miles, 6 speed manual transmission, Lift All Model

LOM-50-2MS, 50' Over Center Boom, Single, 2 Man bucket with 600 lbs. Capacity, Material Handling Jib

Terms: Complete payment is due the day of auction by cash or certified check. Company and personal checks are accepted if accompanied by bank letter guaranteeing funds. Nothing removed until settled for. Not responsible for injury, accident or theft. All items sell to the highest bidder "As is, Where is, With all faults." Buyer is responsible for complete payment of all items regardless of fault or theft. Information and descriptions are believed to be accurate, however, BigIron makes no guarantees as to the accuracy. Buyers are urged to fully inspect each item before bidding. All announcements made the day of auction take precedence over anything written or implied. BigIron are agents only.

Titles: There will be a \$25 title transfer fee applied to all titled items. Titles to any titled items will be mailed to the buyer via certified mail no sooner than 14 days after receipt of payment, regardless of payment type.

Live Internet Bidding available, visit
www.bigiron.com

NEBRASKA PUBLIC POWER DISTRICT OWNERS

NPPD Contacts:

Tim Piper 402-362-7331 • Travis Schweer 402-362-7219 • Steve Dunkin 402-362-7203



Nebraska Public Power District
Always there when you need us

BigIron
ONSITE AUCTIONS

1-800-937-3558 • www.bigiron.com

BigIron
ONSITE AUCTIONS

PO Box 302 • 210 Beaver St.
St. Edward, NE 68660

1-800-937-3558
www.bigiron.com

**PLEASE
POST**

PRST STD
US POSTAGE
PAID
FIRESPRING